The slide features a central white circle containing the text. The background is a collage of elements: a dark red horizontal bar at the top left, a light gray vertical bar on the right, and a dark gray curved shape at the bottom. A brick wall texture is visible on the far right edge.

CLINICAL FAQ SESSION 2023

INTRODUCTION

HOUSEKEEPING

Watch the newsletter for updates

MDS Changes Form

- <https://app.smartsheet.com/b/form/6ad22f73dbcb4bc897d6985b278afc26>

MDS

FOR THE UPDATED MDS CHANGES THIS FALL, WHEN AN ASSESSMENT IS OPEN WITH AN ARD OF 10/01/2023 OR AFTER, CAN IT BE CHANGED TO A PRIOR DATE?

NO, IT CANNOT AND IF ONE IS OPENED PRIOR TO THAT DATE, IT CANNOT BE CHANGED TO A DATE AFTER 10/01/2023 AS WELL. AN ERROR POP-UP WILL OCCUR WARNING YOU TO SELECT A DIFFERENT DATE OR START A NEW ASSESSMENT.

IF THE FUNCTIONAL ABILITIES AND GOALS ASSESSMENT IS NOT DIVIDED INTO ADMISSION, DISCHARGE, AND OBRA/INTERIM SECTIONS, WILL THE INFORMATION STILL FLOW TO THE APPROPRIATE ITEMS IN SECTION GG OF THE MDS?

YES, IT WILL. THIS WILL PULL THE INFORMATION BASED ON DATES AND THE TYPE OF ASSESSMENT.

WILL OSA ASSESSMENTS BE INCLUDED IN THE MDS SCHEDULING TOOL?

NO, BECAUSE SOME STATES REQUIRE AN OSA SCHEDULE THAT DEVIATES FROM THE FEDERAL OBRA SCHEDULE.

MDS

Section to Sign

	NC	NQ	ND	NT	NPE	NP	OSA	IPA	SP	SD	ST	XX	NS	NSD	
A	x	x	x	x	x	x	x	x	x	x	x	x	x	x	^
B	x	x	x			x	x	x	x	x				x	
C	x	x	x			x	x	x	x	x				x	
D	x	x	x			x	x	x	x	x				x	
E	x	x	x			x	x	x	x	x				x	
F	x														
G	x	x	x			x	x	x	x	x			x	x	
GG	x	x	x		x	x		x	x	x				x	
H	x	x	x			x	x	x	x	x			x	x	
I	x	x	x			x	x	x	x	x				x	
J	x	x	x		x	x	x	x	x	x				x	
K	x	x	x			x	x	x	x	x				x	
L	x	x				x									
M	x	x	x		x	x	x	x	x	x				x	
N	x	x	x			x	x	x	x	x				x	^

OK Cancel

**HOW/WHEN DO I TURN OFF SECTION G?
WILL IT BE AUTOMATIC?**

MDS

IF MY STATE HASN'T RELEASED A DECISION ABOUT USING OSA VS PDPM, WHAT SHOULD I EXPECT?

BASED ON INFORMATION RECEIVED FROM STATES UP TO THIS POINT:

- 1. MOVE TO PDPM - YOU WILL BEGIN TO BILL FROM HIPPS CODES.**
- 2. KEEP RUGS – BY ADDING AN OPTIONAL STATE ASSESSMENT.**
- 3. RATE FREEZE – AN OSA WILL NOT BE REQUIRED BUT THE RATE WILL STAY THE SAME UNTIL PDPM IS PUT IN PLACE.**
- 4. OTHER OPTIONS - LET US KNOW WHAT YOUR STATE IS DOING.**

MDS

WILL AN ASSESSMENT BE ABLE TO BE COPIED TO AN OPTIONAL STATE ASSESSMENT?

MDS RESPONSES IN ECS CAN BE SET TO SHOW THE LAST MDS ANSWER WHEN A NEW ASSESSMENT IS OPENED.

MDS

American Data - ECS

Easy - MDS/Care Co... MDS Manager Change MDS - Ad...

Restraints/Alarms - P Participation in Assessment, Goal Setting - Q CAA Summary - Y

ID - A Hearing, Speech, Vision - B Cognitive - C Mood - D Behavior - E Routine, Activities - F Functional Status - G Functional Abilities and Goals - GG Bladder, Bowel - H Diagnosis - I

Hearing, Speech, and Vision

B0100 **Comatose** (Persistent vegetative state/no discernible consciousness)
 0. No -> Continue to B0200, Hearing
 1. Yes -> Skip to G0110, Activities of Daily Living (ADL) Assistance

B0200 Hearing Ability to hear (with hearing aid or hearing appliances if normally used)
 0. Adequate - no difficulty in normal conversation, social interaction, listening to TV
 1. Minimal difficulty - difficulty in some environments (e.g. when person speaks softly or setting is noisy)
 2. Moderate difficulty - speaker has to increase volume and speak distinctly
 3. Highly impaired - absence of useful hearing

B0300 **Hearing Aid** Hearing Aid or other hearing appliance used in completing B0200, Hearing
 0. No
 1. Yes

B0600 **Speech Clarity** Select the best description of speech pattern
 0. Clear speech - distinct intelligible words
 1. Unclear speech - slurred or mumbled words
 2. No speech - absence of spoken words

B0700 **Makes Self Understood**
Ability to express ideas and wants, consider both verbal and non-verbal expression
 0. Understood
 1. Usually understood - difficulty communicating some words or finishing thoughts but is able if prompted or given time
 2. Sometimes understood - ability is limited to making concrete requests
 3. Rarely/never understood

B0800 **Ability To Understand Others**
Understanding verbal content, however able (with hearing aid or device if used)
 0. Understands - clear comprehension
 1. Usually understands - misses some part/intent of message but comprehends most conversations
 2. Sometimes understands - responds adequately to simple, direct communication only
 3. Rarely/never understands

B1000 **Vision**
Ability to see in adequate light (with glasses or other visual appliances)
 0. Adequate - sees fine detail, such as regular print in newspapers/books

B0200-Hearing (Hearing, MDS Assessment)

Excerpt from RAI Manual:

Item Rationale

Health-related Quality of Life

- Problems with hearing can contribute to sensory deprivation, social isolation, and mood and behavior disorders.
- Unaddressed communication problems related to hearing

Spell Check See Also View Tree Close

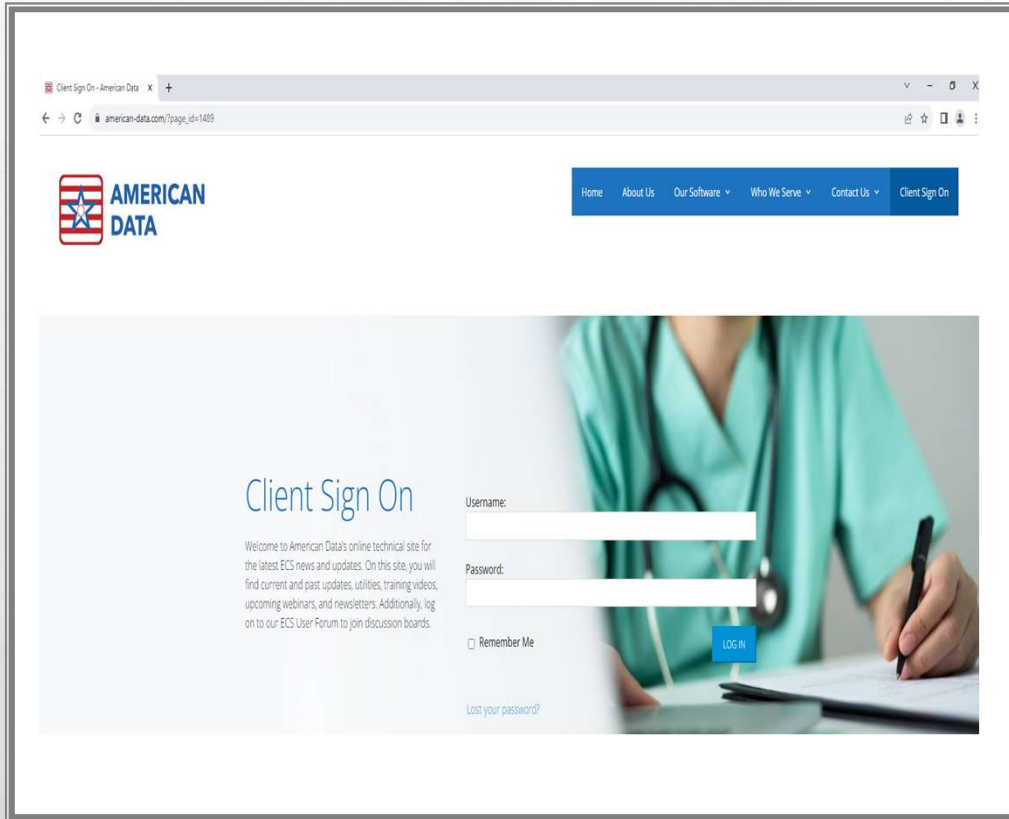
**IS THERE AN EASY WAY TO ACCESS THE RAI
MANUAL WHILE COMPLETING AN MDS
ASSESSMENT?**

MDS

WHERE CAN I FIND MDS CODING TRAINING?

CMS SKILLED NURSING FACILITY QUALITY REPORTING PROGRAM TRAINING WEBSITE.

LINK INCLUDED IN THE HANDOUT.



ECS TRAINING

HOW DO I ACCESS ECS TRAINING MATERIALS AND VIDEOS?

WWW.AMERICAN-DATA.COM

CLIENT SIGN ON

MDS - IQIES

WHY DO I SOMETIMES RECEIVE RECALCULATION WARNINGS ON MY MDS TRANSMISSION FILE REPORT I RECEIVE FROM THE IQIES SYSTEM?

THEY ARE WARNINGS NOT REJECTIONS.

1. UPDATED PDPM GROUPEL.

2. ECS VERSION NOT UP TO DATE.

3. LATEST ECS VERSION BUT HIPPS CALCULATED PRIOR TO UPDATING

A. RECALCULATE HIPPS

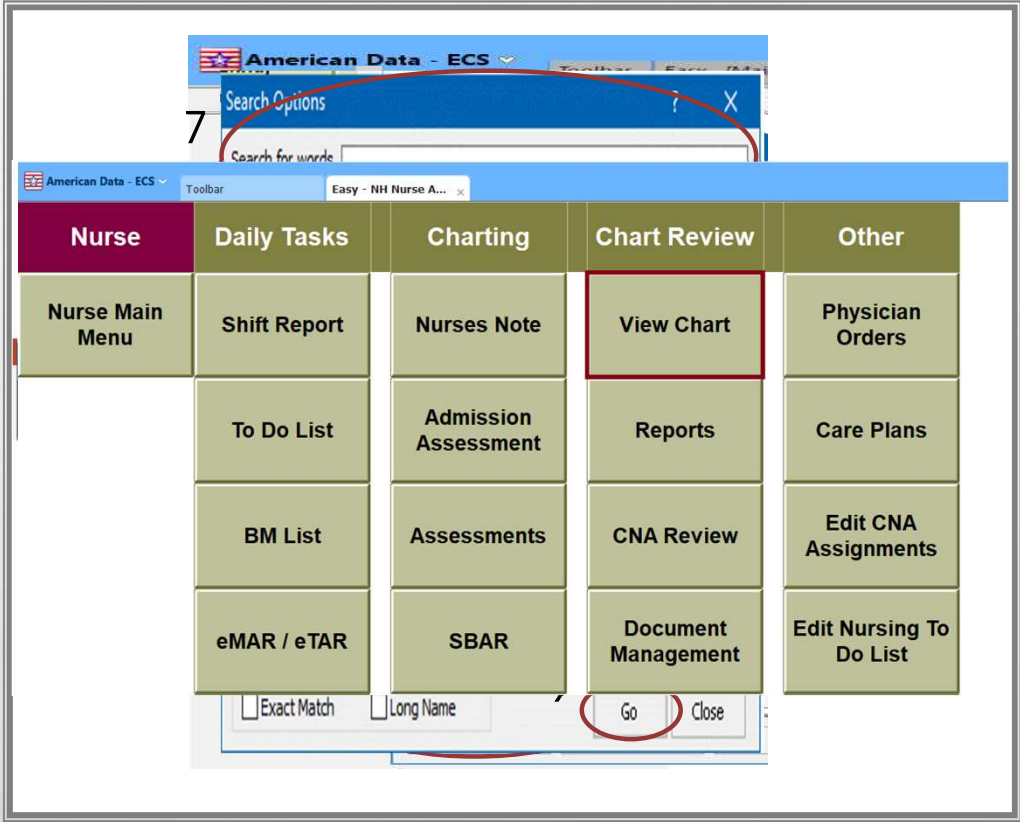
B. CONTACT THE ECS CLINICAL DEPARTMENT

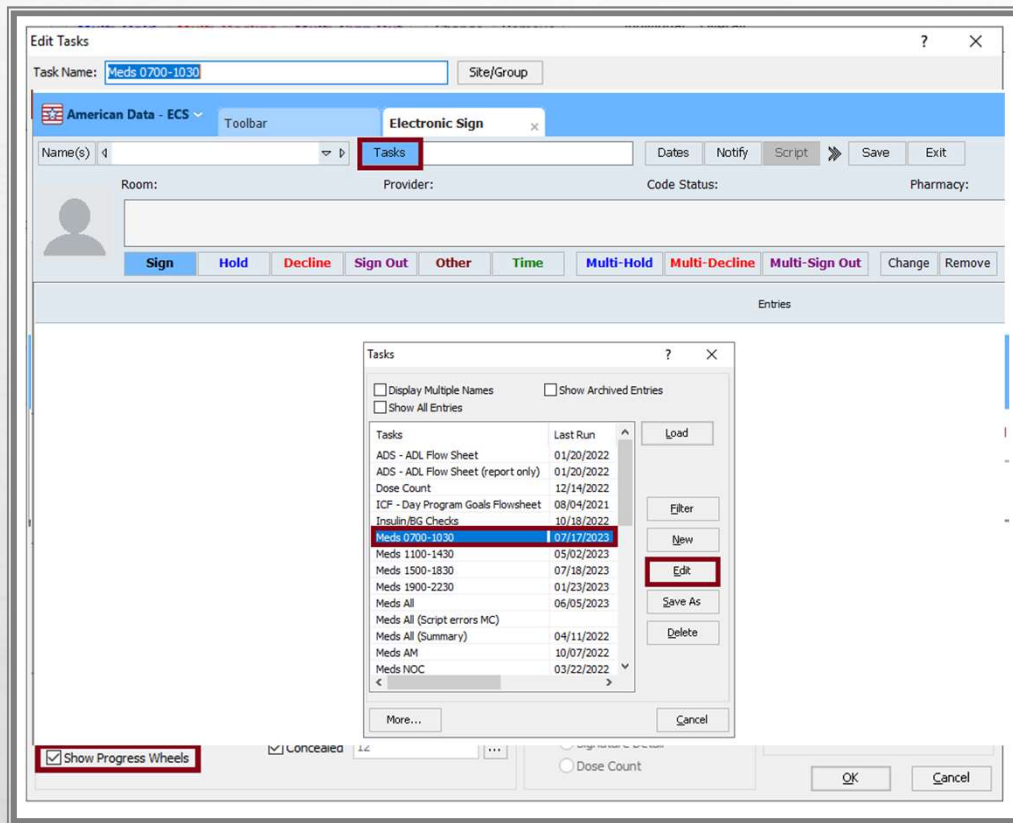
MEDICATION LOOK UP

HOW TO LOOK UP ORDERS FOR A SPECIFIC MEDICATION?

TWO WAYS TO GET THERE

- 1. VIEW CHART ON ACCESS SCREEN**
- 2. GREEN VIEW ICON**





MAR/TAR

HOW DO I GET THE PROGRESS WHEELS BACK ONTO THE MAR/TAR?

CHECK BOX IN THE ELECTRONIC SIGN SETUP

ECS UPDATES

WHEN DOES AMERICAN DATA RELEASE NEW UPDATES?

THERE ARE TWO LARGE UPDATES A YEAR.

AND HOW WILL I KNOW WHEN A NEW UPDATE HAS BEEN RELEASED?

THEY WILL BE POSTED TO OUR WEBSITE, AND WE SEND EMAILS OUT TO THOSE THAT OPT IN FOR UPDATE RELEASE EMAILS.

NEW SETUPS OR MODULES

HOW DO I KNOW WHEN AMERICAN DATA BUILDS NEW SETUPS OR MODULES? WHERE CAN I LEARN MORE ABOUT WHAT IS AVAILABLE?

THERE ARE A FEW DIFFERENT AREAS THAT WE PROMOTE THIS INFORMATION.

- 1. OUR NEWSLETTER**
- 2. WEBSITE > CLIENT SIGN ON**
- 3. WEBINARS**

QUESTIONS?

THANK YOU

RACHEL SCHRAUFNAGEL

CLINICAL@AMERICAN-DATA.COM

WWW.AMERICAN-DATA.COM